

Trụ sở chính:

Đường số 2A, KCN Mỹ Xuân A,
Huyện Tân Thành, Tỉnh Bà Rịa -
Vũng Tàu, Việt Nam
Tel: 84 064 393 2333
Fax: 84 064 393 2338

Chi nhánh Cần Thơ

225 Đường 3/2, Phường Hưng
Lợi, Quận Ninh Kiều, TP.
Cần Thơ
Tel: 84 0710 383 9999
Fax: 84 0710 383 1111

Chi nhánh Hải Phòng

750 Nguyễn Văn Linh, Quận Lê
Chân, TP. Hải Phòng
Tel: 84 031 378 4555
Fax: 84 031 378 4666

Chi nhánh Hồ Chí Minh

270A Lý Thường Kiệt, Quận 10,
TP. Hồ Chí Minh
Tel: 84 08 3864 9800
Fax: 84 08 3864 9808

Chi nhánh Đà Nẵng

Lô 48, Đường số 4, KCN Đà Nẵng _
An Đồn, Quận Sơn Trà, TP. Đà Nẵng
Tel: 84 0511 393 1222
Fax: 84 0511 393 1228

Chi nhánh Hà Nội

Khu vực kho Nhà Máy Đồng Tâm
Hà Nội, Phường Thanh Trì,
Quận Hoàng Mai, TP. Hà Nội
Tel: 84 04 3644 6555
Fax: 84 04 3644 6553

Chi nhánh Nha Trang

Số 82, Đường Vân Dồn, TP. Nha Trang
Tỉnh Khánh Hòa
Tel: 84 058 387 4222
Fax: 84 058 387 2000



Công Ty TNHH Công Nghiệp Gốm Bạch Mã (Việt Nam)

Đường số 2A, KCN Mỹ Xuân A, Xã Mỹ Xuân, Huyện Tân Thành Tỉnh Bà Rịa Vũng Tàu

WHITE HORSE CERAMIC INDUSTRIES (VIETNAM) CO.,LTD

Tel: 84 064 393 2333 Fax: 84 064 393 2338

Email: whvn@vnn.vn Website: www.whitehorseceramic.com.vn

Evolution

SERIES

300mm x 600mm

600mm x 600mm



The accuracy of colours shown in this brochure is as close as the printing process will allow. The appearance of tiles featured in this brochure may differ from the actual items sold. The pictures are only illustrative of the tile combinations. White Horse Ceramic Industries (VN) co., ltd reserves the right to amend the colour range or specifications of tiles at any time and without notice. All tile are packed in accordance with the standard packing list. For special orders and cushion sizes, tile products will be custom packed based on quantity and specification requested.

Độ chính xác của màu sắc trong catalogue chỉ mang tính chất tương đối của quy trình in cho phép. Màu sắc của gạch trong catalogue có thể khác so với thực tế. Hình ảnh chỉ mang tính chất minh họa. Công Ty TNHH Công Nghiệp Gốm Bạch Mã (Việt Nam) có quyền thay đổi màu sắc hoặc quy cách của gạch bất cứ lúc nào mà không cần báo trước. Tất cả các gạch được đóng gói theo tiêu chuẩn packing list. Đối với các đơn đặt hàng đặc biệt và kích thước theo yêu cầu, sản phẩm gạch sẽ được đóng gói riêng dựa theo số lượng và yêu cầu cụ thể.





EVOLUTION SERIES

MSV3001 300mm x 600mm



EVOLUTION SERIES

MSV3002 MSV6002 L63008 300mm x 600mm 600mm x 600mm 30mm x 600mm





EVOLUTION SERIES

MSV6005 LHQ60010 600mm x 600mm 300mm x 300mm



EVOLUTION SERIES

MSV6007 600mm x 600mm





EVOLUTION SERIES

MSV6006 600mm x 600mm



EVOLUTION SERIES

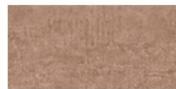
MSV3002 300mm x 600mm



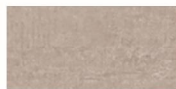
EVOLUTION SERIES 300mm x 600mm



MSV3601
300mmx600mm



MSV3602
300mmx600mm



MSV3605
300mmx600mm



MSV3607
300mmx600mm

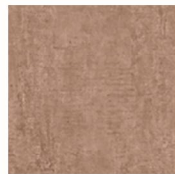


MSV3608
300mmx600mm

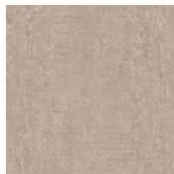
EVOLUTION SERIES 600mm x 600mm



MSV6001
600mmx600mm



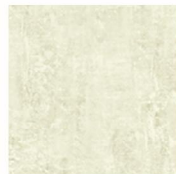
MSV6002
600mmx600mm



MSV6005
600mmx600mm



MSV6007
600mmx600mm



MSV6008
600mmx600mm

L63005

30mm x 600mm

L63006

30mm x 600mm

L63008

30mm x 600mm

L63007

30mm x 600mm

L63009

30mm x 600mm

**AHQ63008**

300mm x 300mm

**AHQ63009**

300mm x 300mm

**AHQ63010**

300mm x 300mm

**AHQ63011**

300mm x 300mm

**AHQ63020**

300mm x 300mm

**BHQ63008**

300mm x 450mm

**BHQ63009**

300mm x 450mm

**BHQ63010**

300mm x 450mm

**BHQ63011**

300mm x 450mm

**BHQ63020**

300mm x 450mm

**LHQ63008**

300mm x 300mm

**LHQ63009**

300mm x 300mm

**LHQ63010**

300mm x 300mm

**LHQ63011**

300mm x 300mm

**LHQ63020**

300mm x 300mm

WHITE HORSE TEST REPORTS

DIMENSIONS AND SURFACE QUALITY	WHITESTILE EN. CERTIFIED		PHYSICAL PROPERTIES	WHITESTILE EN. CERTIFIED		CHEMICAL PROPERTIES	WHITESTILE EN. CERTIFIED	
	ISO 10545 Standard	White Horse Tiles (Test Result by QATEST)		ISO 10545 Standard	White Horse Tiles (Test Result by QATEST)		ISO 10545 Standard	White Horse Tiles (Test Result by QATEST)
Length and Width	± 0.6%	Passed	Water Absorption	Maximum 0.5%	Average 0.07% Individual Maximum 0.10%	Chemical Resistance To Household Chemical Of Glazed Tiles	Minimum GB	No Visible Effect (GA)
Thickness	+ 0.5%	Passed	Breaking Strength	Not Less Than 1300N	Average 2000N	Chemical Resistance To Sulfuring Pool Salts Of Glazed Tiles	Minimum GB	No Visible Effect (GA)
Straightness of Sides	± 0.5%	Passed	Modulus of Rupture	Minimum 35N/mm ²	Average 63N/mm ² Individual Minimum 56N/mm ²	Chemical Resistance To Hydrochloric Acid (3%) Of Glazed Tiles	GLA	No Visible Effect (GA)
Rectangularity	+ 0.6%	Passed	Resistance to Deep Abrasion of Unglazed Tiles	Maximum 175mm ²	156mm ²	Chemical Resistance To Citric Acid (100g/l) Of Glazed Tiles	GLB	Definite Change in Appearance (GLA)
Flatness of Surface	± 0.5%	Passed	Resistance to Surface Abrasion of Glazed Tiles	Class: For Normal Footwear Class 4; For Regular Traffic With Some Scratching Dirt	Class 4	Chemical Resistance To Potassium Hydroxide (50g/l) Of Glazed Tiles	GLC	Partial Or Complete Loss Of The Original Surface (GLA)
Centre Curvature	± 0.5%							
Edge Curvature	± 0.5%	Passed						
Warpage	± 0.5%	Passed						
Surface Quality	A Minimum of 100% free from visible defects	Passed	Drazing Resistance	No Cracking Observed	Pass	Staining Resistance Test Of Glazed Tiles	Minimum Class 3	Class 5 (Flaw Can Be Easily Removed With Rinsing Hot Water)

SIZE	CARTON		PALLET	
	Pcs/Ctn	Pallet/Ctn	M2/Ctn	M2/Pallet
30 cm x 60 cm	8	72	1.44	103.68
60 cm x 60 cm	4	40	1.44	57.6
3 cm x 60 cm	60	60	1.08	64.80
30 cm x 30 cm (LHQ)	11	63	0.99	62.37
30 cm x 30 cm (AHQ)	11	63	0.99	62.37
30 cm x 45 cm (BHQ)	10	48	1.35	64.80