

Trụ sở chính:

Đường số 2A, KCN Mỹ Xuân A,
Huyện Tân Thành, Tỉnh Bà Rịa -
Vũng Tàu, Việt Nam
Tel: 84 0254 393 2333
Fax: 84 0254 393 2338

Chi nhánh Cần Thơ

225 Đường 3/2, Phường Hưng
Lợi, Quận Ninh Kiều, TP.
Cần Thơ
Tel: 84 0292 383 9999
Fax: 84 0292 383 1111

Chi nhánh Hải Phòng

750 Nguyễn Văn Linh, Quận Lê
Chân, TP. Hải Phòng
Tel: 84 0225 378 4555
Fax: 84 0225 378 4666

Chi nhánh Hồ Chí Minh

270A Lý Thường Kiệt, Quận 10,
TP. Hồ Chí Minh
Tel: 84 0283 3864 9800
Fax: 84 0283 3864 9808

Chi nhánh Đà Nẵng

Lô 48, Đường số 4, KCN Đà Nẵng _
An Đồn, Quận Sơn Trà, TP. Đà Nẵng
Tel: 84 0236 393 1222
Fax: 84 0236 393 1228

Chi nhánh Hà Nội

Khu vực kho Nhà Máy Đóng Tàu
Hà Nội, Phường Thanh Trì,
Quận Hoàng Mai, TP. Hà Nội
Tel: 84 0243 3644 6555
Fax: 84 0243 3644 6553

Chi nhánh Nha Trang

Số 131B, Đường 23/10, Phường Phương Sơn,
TP. Nha Trang, Tỉnh Khánh Hòa
Tel: 84 0258 3821 085
Fax: 84 0258 3821 086



Công Ty TNHH Công Nghiệp Gốm Bạch Mã (Việt Nam)

Đường số 2A, KCN Mỹ Xuân A, Phường Mỹ Xuân, Thị Xã Phú Mỹ, Tỉnh Bà Rịa Vũng Tàu, Việt Nam.

WHITE HORSE CERAMIC INDUSTRIES (VIETNAM) CO.,LTD

Tel: 84 0254 393 2333

Fax: 84 0254 393 2338

Email: cshq@whitehorse.vn

Website: www.whitehorse.vn

whvn@vnn.vn

The accuracy of colours shown in this brochure is as close as the printing process will allow. The appearance of tiles featured in this brochure may differ from the actual items sold. The pictures are only illustrative of the tile combinations. White Horse Ceramic Industries (VN) co., ltd reserves the right to amend the colour range or specifications of tiles at any time and without notice. All tile are packed in accordance with the standard packing list. For special orders and custom sizes, tile products will be custom packed based on quantity and specification requested.

Độ chính xác của màu sắc trong catalogue chỉ mang tính chất tương đối của quy trình in cho phép. Màu sắc của gạch trong catalogue có thể khác so với thực tế. Hình ảnh chỉ mang tính chất minh họa. Công Ty TNHH Công Nghiệp Gốm Bạch Mã (Việt Nam) có quyền thay đổi màu sắc hoặc quy cách của gạch bất cứ lúc nào mà không cần báo trước. Tất cả các gạch được đóng gói theo tiêu chuẩn packing list. Đối với các đơn đặt hàng đặc biệt và kích thước theo yêu cầu, sản phẩm gạch sẽ được đóng gói riêng dựa theo số lượng và yêu cầu cụ thể.



LORENA

300mm x 600mm



LORENA

300x600 / PORCELAIN STONE (HE36039)



LORENA

300x600 / PORCELAIN STONE (HE36040)



LORENA

300X600 / PORCELAIN STONE (HE36040)



LORENA

300X600 / PORCELAIN STONE (HE36042)

LORENA SERIES

300mm x 600mm 12" x 24"

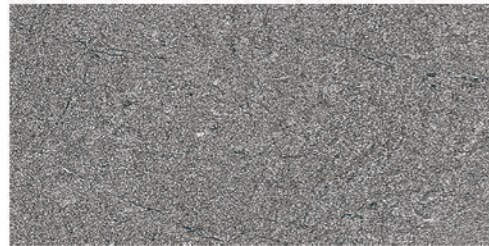
WHITE HORSE
DIGITAL
Inkjet Printing Technology



HE36039



HE36040



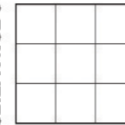
HE36042

WHITE HORSE TEST REPORTS

DIMENSIONS AND SURFACE QUALITY	PORCELAIN TILES - GROUP B1a		PHYSICAL PROPERTIES	PORCELAIN TILES - GROUP B1a		CHEMICAL PROPERTIES	PORCELAIN TILES - GROUP B1a	
	ISO 10545 Standard	White Horse Tiles (Test Result By SIRIM)		ISO 10545 Standard	White Horse Tiles (Test Result By SIRIM)		ISO 10545 Standard	White Horse Tiles (Test Result By SIRIM)
Length and Width	± 0.6%	Passed	Water Absorption	Maximum 0.5%	Average 0.07% Individual Maximum 0.10%	Chemical Resistance To Household Chemical Of Glazed Tiles	Minimum GB	No Visible Effect (GA)
Thickness	± 0.5%	Passed	Breaking Strength	Not Less Than 1300N	Average 2000N	Chemical Resistance To Swimming Pool Salts Of Glazed Tiles	Minimum GB	No Visible Effect (GA)
Straightness of Sides	± 0.5%	Passed	Modulus of Rupture	Minimum 35N/mm ²	Average 63N/mm ² Individual Minimum 56N/mm ²	Chemical Resistance To Hydrochloric Acid (3%) Of Glazed Tiles	GLA: No Visible Effect	GLA
Rectangularity	± 0.6%	Passed	Resistance to Deep Abrasion of Unglazed Tiles	Maximum 175mm ³	126mm ³	Chemical Resistance To Citric Acid (100g/l) Of Glazed Tiles	GLB: Definite Change In Appearance	GLA
Flatness of Surface	± 0.5%	Passed	Resistance to Surface Abrasion of Glazed Tiles	Class3: For Normal Footwear Class4: For Regular Traffic With Some Scratching Dirt	Class4	Chemical Resistance To Potassium Hydroxide (30g/l) Of Glazed Tiles	GLC: Partial Or Complete Loss Of The Original Surface	GLA
Centre Curvature	± 0.5%							
Edge Curvature	± 0.5%							
Warpage	± 0.5%	Passed	Crazing Resistance	No Crazing Observed	Pass	Staining Resistance Test Of Glazed Tiles	Minimum Class 3	Class5 (Stain Can Be Easily Removed With Running Hot Water)

SHADE & TONALITIES

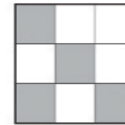
V1 UNIFORM FROM TILE TO TILE



V1

Colour range and tonality within the same shade is fairly uniform from tile to tile.
Minimal to zero difference among tiles from the same production run.

V2 SLIGHTLY NOTICEABLE FROM TILE TO TILE



V2

Colour range and tonality within the same shade is slightly noticeable from tile to tile.
Visibly distinguished difference in design or pattern with minimal change in colour tones.

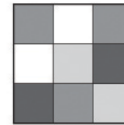
V3 MODERATELY NOTICEABLE FROM TILE TO TILE



V3

Colour range and tonality within the same shade is moderately noticeable from tile to tile.
Visibly distinguished difference in design or pattern.

V4 DISTINCTLY NOTICEABLE FROM TILE TO TILE



V4

Colour range and tonality within the same shade is distinctly noticeable from tile to tile.
Random colour differences from tile to tile create the possibility of unique tile compositions.

SIZE	CARTON		PALLET	
	Pcs/Ctn	Pallet	M2/Ctn	M2/Pallet
30 cm x 60 cm	8	72	1.44	103.68